

# Certificate of Analysis

Aug 02, 2021 | Vapen KY, LLC

Sample:KN10729001-003

Harvest/Lot ID: B005-020

Seed to Sale# N/A

Batch Date: 07/27/21

Batch#: B006

Sample Size Received: 8 gram

Total Weight/Volume: N/A

Retail Product Size: 1000 gram

Ordered : 07/27/21

sampled : 07/27/21

Completed: 08/02/21 Expires:

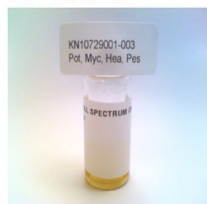
08/02/22 Sampling Method: SOP

Client Method

**PASSED**

Page 1 of 4

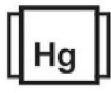
## PRODUCT IMAGE



## SAFETY RESULTS



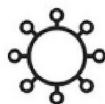
Pesticides  
**PASSED**



Heavy Metals  
**PASSED**



Microbials  
**PASSED**



Mycotoxins  
**PASSED**



Residual Solvents  
**PASSED**



Filth  
**PASSED**



Water Activity  
**NOT TESTED**



Moisture  
**NOT TESTED**



Terpenes  
**NOT TESTED**

## MISC.

## CANNABINOID RESULTS



Total THC  
**0.235%**




Total CBD  
**55.128%**



Total Cannabinoids  
**61.195%**

	CBDV	CBDa	CBGA	CBG	CBD	THCV	CBN	D9-THC	D8-THC	CBC	THCA
%	0.3420	ND	0.0230	5.2000	55.1280	<0.010	0.0140	0.2350	ND	0.2490	<0.010
mg/g	3.4200	ND	0.2300	52.0000	551.2800	<0.010	0.1400	2.3500	ND	2.4900	<0.010
LOD	0.0010	0.0010	0.0010	0.0010	0.0010	0.0010	0.0010	0.0010	0.0010	0.0010	0.0010
%	%	%	%	%	%	%	%	%	%	%	%

	<b>Filth</b>	<b>PASSED</b>
---	--------------	---------------

Analyzed By 142 Weight 0.6869g Extraction date NA Extracted By NA  
Analyte LOD Result  
Filth and Foreign Material 0.3ND  
Analysis Method -SOP.T.40.013 Batch Date : 07/30/21 14:25:02  
Analytical Batch -KN001166FIL Reviewed On - 07/30/21 15:05:23  
Instrument Used : E-AMS-138 Microscope  
Running On :

This includes but is not limited to hair, insects, feces, packaging contaminants, and manufacturing waste and by-products. A SW-2T13 Stereo Microscope is used for inspection.

## Cannabinoid Profile Test

Analyzed by 113 Weight 0.2054g Extraction date : 07/29/21 12:07:38 Extracted By : 946  
Analysis Method -Expanded Measurement of Uncertainty: Flower Matrix d9-THC:12.7%, THCA: 9.5%, TOTAL THC 11.1%. These uncertainties represent an expanded uncertainty expressed at approximately the 95% confidence level using a coverage factor k=2 for a normal distribution. 10:27:03  
Analytical Batch -KN001153POT Instrument Used : HPLC E-SHI-008 Running On : Batch Date : 07/29/21 08:17:04

Reagent	Dilution	Consums. ID
120320.R02 072621.R01 071421.R01	40	94789291.217 0030220

Full spectrum cannabinoid analysis utilizing High Performance Liquid Chromatography with UV detection (HPLC-UV). (Method: SOP.T.30.050 for sample prep and Shimadzu High Sensitivity Method SOP.T.40.020 for analysis.). \*Based on FL action limits.

**Sue Ferguson**

Lab Director

State License # n/a  
ISO Accreditation #  
17025:2017

  
Signature

08/02/21

Signed On

# Certificate of Analysis

**PASSED**

Sample :KN10729001-003

Harvest/LOT ID:B005-020


Batch# :B006Sample Size Received : 8 gram

Sampled : 07/27/21Total Weight/Volume : N/A

Ordered : 07/27/21Completed : Expires: 08/02/21 08/02/22

Sample Method : SOP Client Method

Page 2 of 4

	<b>Pesticides</b>	<b>PASSED</b>
		Action LevelResult

Pesticides	LOD	Units	Action Level	Result	Pesticides	LOD	Units	Action Level	Result
ABAMECTIN B1A	0.01	pp	0.3	ND	PIPERONYL BUTOXIDE	0.01	pp	3	ND
ACEPHATE	0.01	m	3	ND	PRALLETHRIN	0.01	m	0.4	ND
ACEQUINOCYL	0.01	pp	2	0.132	PROPICONAZOLE	0.01	pp	1	ND
ACETAMIPRID	0.01	m	3	ND	PROPOXUR	0.01	m	0.1	ND
ALDICARB	0.01	pp	0.1	ND	PYRETHRINS	0.01	pp	1	ND
AZOXYSTROBIN	0.01	m	3	ND	PYRIDABEN	0.01	m	3	ND
BIFENAZATE	0.01	pp	3	ND	SPINETORAM	0.01	pp	3	ND
BIFENTHRIN	0.01	m	0.5	ND	SPIROMESIFEN	0.01	m	3	ND
BOSCALID	0.01	pp	3	ND	SPIROTETRAMAT	0.01	pp	3	ND
CARBARYL	0.01	m	0.5	ND	SPIROXAMINE	0.01	m	0.1	ND
CARBOFURAN	0.01	pp	0.1	ND	TEBUCONAZOLE	0.01	pp	1	ND
CHLORANTRANILIPROLE	0.01	m	3	ND	THIACLOPRID	0.01	m	0.1	ND
CHLORMEQUAT CHLORIDE	0.01	pp	3	ND	THIAMETHOXAM	0.01	pp	1	ND
CHLORPYRIFOS	0.01	m	0.1	ND	TOTAL SPINOSAD	0.01	m	3	ND
CLOFENTEZINE	0.01	pp	0.5	ND	TRIFLOXYSTROBIN	0.01	pp	3	0.095
COUMAPHOS	0.01	m	0.1	ND					
CYPERMETHRIN	0.01	pp	1	ND					
DAMINOZIDE	0.01	m	0.1	ND					
DIAZANON	0.01	pp	0.2	ND					
DICHLORVOS	0.01	m	0.1	ND					
DIMETHOATE	0.01	pp	0.1	ND					
DIMETHOMORPH	0.01	m	3	ND					
ETHOPROPHOS	0.01	pp	0.1	ND					
ETOFENPROX	0.01	m	0.1	ND					
ETOXAZOLE	0.01	pp	1.5	ND					
FENHEXAMID	0.01	m	3	ND					
FENOXYCARB	0.01	pp	0.1	ND					
FENPYROXIMATE	0.01	m	2	ND					
FIPRONIL	0.01	pp	0.1	ND					
FLONICAMID	0.01	m	2	ND					
FLUDIOXONIL	0.01	pp	3	ND					
HEXYTHIAZOX	0.01	m	2	ND					
IMAZALIL	0.01	pp	0.1	ND					
IMIDACLOPRID	0.01	m	3	ND					
KRESOXIM-METHYL	0.01	pp	1	ND					
MALATHION	0.01	m	2	ND					
METALAXYL	0.01	pp	3	ND					
METHIOCARB	0.01	m	0.1	ND					
METHOMYL	0.01	pp	0.1	ND					
MEVINPHOS	0.01	m	0.1	ND					
MYCLOBUTANIL	0.01	pp	3	ND					
NALED	0.01	m	0.5	ND					
OXAMYL	0.01	pp	0.5	ND					
PACLOBUTRAZOL	0.01	m	0.1	ND					
PERMETHRINS	0.01	pp	1	ND					
PHOSMET	0.01	m	0.2	ND					

<

Pesticide screen is performed using LC-MS which can screen down to below single digit ppb concentrations for regulated Pesticides. Currently we analyze for 147 Pesticides. (Method: SOP.T.30.060 Sample Preparation for Pesticides Analysis via LCMSMS and SOP.T.40.060 Procedure for Pesticide Quantification Using LCMS). Analytes ISO pending. \*Based on FL action limits. \*

This report shall not be reproduced, in whole or in part, without written approval from Kaycha Labs. This report is an Kaycha Labs certification. The results relate only to the material or product analyzed. Test results are confidential unless explicitly waived otherwise. RPD after 1 year from test end date. Cannabinoid content of batch material may vary depending on sampling error. IC=In-control QC parameter, NC=Non-controlled QC parameter, ND=Not Detected, NA=Not Analyzed, ppm=Parts Per Million, ppb=Parts Per Billion. Limit of Detection (LoD) and Limit Of Quantitation (LoQ) are terms used to describe the smallest concentration that can be reliably measured by an analytical procedure. RPD=Reproducibility of two measurements. Action Levels are State determined thresholds for human safety for consumption and/or inhalation. The result >99% are variable based on uncertainty of measurement (UM) for the analyte. The UM error is available from the lab upon request. The "Decision Rule" for the pass/fail does not include the UM. The limits are based on F.S. Rule 64-4.310.

**Sue Ferguson**

Lab Director

State License # n/a  
ISO Accreditation #  
17025:2017

  
Signature

08/02/21

Signed On



# PASSED

Sample :KN10729001-003  
Harvest/LOT ID:B005-020  
Batch#: B006Sample Size Received : 8 gram  
Sampled : 07/27/21Total Weight/Volume: N/A  
Ordered : 07/27/21Completed : Expires: 08/02/21 08/02/22  
Sample Method : SOP Client Method

Page 3 of 4



**PASSED**



# PASSED

Analyzed by	Weight	Extraction date	Extracted By
138	0.02466g	07/29/21 02:07:00	138

Analysis Method -SOP.T.40.032  
Analytical Batch -KN001158SOLReviewed On - 08/02/21 14:56:07  
Instrument Used : E-SHI-106 Residual Solvents  
Running On : 07/29/21 16:59:25  
Batch Date : 07/29/21 11:32:52

Reagent	Dilution	Consums. ID
		1065518282V1393

Residual solvents screening is performed using GC-MS which can detect below single digit ppm concentrations. Currently we analyze for 22 residual solvents. (Method: SOP.T.40.032 Residual Solvents Analysis via GC-MS). Analytes ISO pending. \*Based on FL action limits.

This report shall not be reproduced, unless in its entirety, without written approval from Kaycha Labs. This report is an Kaycha Labs certification. The results relate only to the material or product analyzed. Test results are confidential unless explicitly waived otherwise. Void after 1 year from test end date. Cannabinoid content of batch material may vary depending on sampling error. IC=In-control QC parameter, NC=Non-controlled QC parameter, ND=Not Detected, NA=Not Analyzed, ppm=Parts Per Million, ppb=Parts Per Billion, Limit of Detection (LoD) and Limit Of Quantitation (LoQ) are terms used to describe the smallest concentration that can be reliably measured by an analytical procedure. RPD=Reproducibility of two measurements. Action Levels are State determined thresholds for human safety for consumption and/or inhalation. The result >99% are variable based on uncertainty of measurement (UM) for the analyte. The UM error is available from the lab upon request. The "Decision Rule" for the pass/fail does not include the UM. The limits are based on F.S. Rule 64-4.310.

**Sue Ferguson**  
Lab Director

State License # n/a  
ISO Accreditation #  
17025:2017

Signature

08/02/21

Signed On



# Certificate of Analysis

**PASSED**

**Sample :** KN10729001-003  
**Harvest/LOT ID:** B005-020  
**Batch# :** B006 **Sample Size Received :** 8 gram  
**Sampled :** 07/27/21 **Total Weight/Volume :** N/A  
**Ordered :** 07/27/21 **Completed :** Expires 08/02/21 08/02/22  
**Sample Method :** SOP Client Method

Page 4 of 4

	<b>Microbials</b>	<b>PASSED</b>
--	-------------------	---------------

Analyte	LOD	Result
ESCHERICHIA_COLI_SHIGELLA_SPP		not present in 1 gram.
SALMONELLA_SPECIFIC_GENE		not present in 1 gram.
ASPERGILLUS_FLAVUS		not present in 1 gram.
ASPERGILLUS_FUMIGATUS		not present in 1 gram.
ASPERGILLUS_NIGER		not present in 1 gram.
ASPERGILLUS_TERREUS		not present in 1 gram.

**Analysis Method** -SOP.T.40.043  
**Analytical Batch** -KN001160MIC **Batch Date** : 07/30/21  
**Instrument Used** : Micro E-HEW-069  
**Running On** : 07/30/21

Analyzed by	Weight	Extraction date	Extracted By
142	1.0302g	NA	NA

Reagent	Consums. ID
061821.01 003102	
020821.04	
030421.01	
Microbiological testing for Fungal and Bacterial Identification via Polymerase Chain Reaction (PCR) method consisting of sample DNA amplified via tandem Polymerase Chain Reaction (PCR) as a crude lysate which avoids purification. (Method SOP.T.40.043) If a pathogenic Escherichia Coli, Salmonella, Aspergillus fumigatus, Aspergillus flavus, Aspergillus niger, or Aspergillus terreus is detected in 1g of a sample, the sample fails the microbiological-impurity testing.	

	<b>Mycotoxins</b>	<b>PASSED</b>
---	-------------------	---------------

Analyte	LOD	Units	Result	Action Level (PPM)
AFLATOXIN G20.002ppm	ND0.02	AFLATOXIN	G10.002ppm	ND0.02
AFLATOXIN B20.002ppm	ND0.02	AFLATOXIN	B10.002ppm	ND0.02
OCHRATOXIN A+0.002ppm	ND0.02	TOTAL MYCOTOXINS	0.002ppm	ND

**Analysis Method** -SOP.T.30.060, SOP.T.40.060  
**Analytical Batch** -KN001154MYC | **Reviewed On** - 07/30/21 13:26:07  
**Instrument Used** : E-SHI-125 Mycotoxins  
**Running On** : 07/29/21 13:15:49  
**Batch Date** : 07/29/21 09:00:45

Analyzed by	Weight	Extraction date	Extracted By
1431.0205g	07/29/21 01:07:23	143	
Aflatoxins B1, B2, G1, G2, and Ochratoxins A testing using LC-MS. (Method: SOP.T.30.060 for Sample Preparation and SOP.T.40.060 Procedure for Mycotoxins Quantification Using LCMS. LOQ 1.0 ppb). Total Aflatoxins (Aflatoxin B1, B2, G1, G2) must be <20µg/Kg. Ochratoxins must be <20µg/Kg. Analytes ISO pending. *Based on FL action limits.			

	<b>Heavy Metals</b>	<b>PASSED</b>
---	---------------------	---------------

Reagent	Dilution	Consums. ID
060221.R29	50	7226/003002
052021.R19		1 210117060
040521.R03		
040521.R04		

Metal	LOD	Unit	Result	Action Level (PPM)
ARSENIC-AS	0.02	pp	ND	1.5
CADMIUM-CD	0.02	m	ND	0.5
MERCURY-HG	0.02	pp	ND	3
LEAD-PB	0.02	m	<LOQ	0.5

Analyzed by	Weight	Extraction date	Extracted By
120.2607g	07/30/21 06:07:15	120	

**Analysis Method** -SOP.T.40.050, SOP.T.30.052  
**Analytical Batch** -KN001151HEA | **Reviewed On** - 08/02/21 14:45:09  
**Instrument Used** : Metals ICP/MS  
**Running On** :  
**Batch Date** : 07/28/21 15:36:56

Heavy Metals screening is performed using ICP-MS (Inductively Coupled Plasma – Mass Spectrometer) which can screen down to below single digit ppb concentrations for regulated heavy metals using Method SOP.T.30.052 Sample Preparation for Heavy Metals Analysis via ICP-MS and SOP.T.40.050 Heavy Metals Analysis via ICP-MS. Analytes ISO Pending. \*Based on FL action limits.

This report shall not be reproduced, unless in its entirety, without written approval from Kaycha Labs. This report is an Kaycha Labs certification. The results relate only to the material or product analyzed. Test results are confidential unless explicitly waived otherwise. Void after 1 year from test end date. Cannabinoid content of batch material may vary depending on sampling error. IC=In-control QC parameter, NC=Non-controlled QC parameter, ND=Not Detected, NA=Not Analyzed, ppm=Parts Per Million, ppb=Parts Per Billion. Limit of Detection (LoD) and Limit Of Quantitation (LoQ) are terms used to describe the smallest concentration that can be reliably measured by an analytical procedure. RPD=Reproducibility of two measurements. Action Levels are State determined thresholds for human safety for consumption and/or inhalation. The result >99% are variable based on uncertainty of measurement (UM) for the analyte. The UM error is available from the lab upon request. The "Decision Rule" for the pass/fail does not include the UM. The limits are based on F.S. Rule 64-4.310.

**Sue Ferguson**

Lab Director

State License # n/a  
 ISO Accreditation #  
 17025:2017

  
 Signature

08/02/21

Signed On